



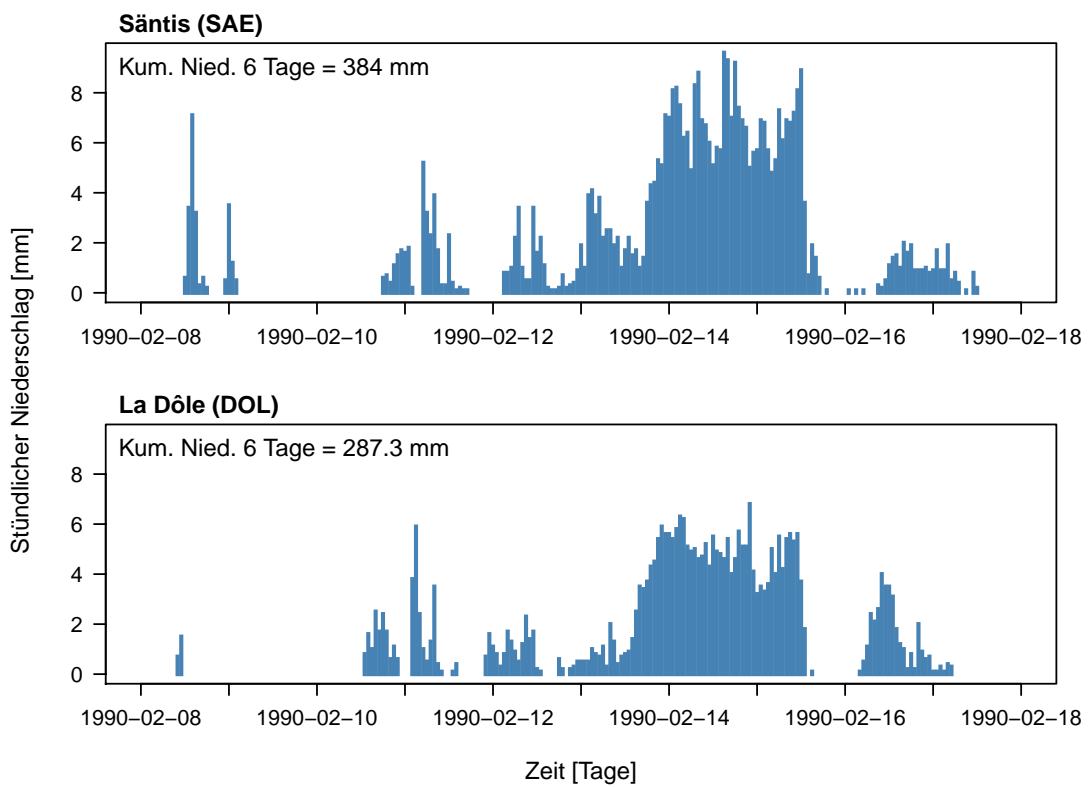
## Ereignis vom 10.-15. Februar 1990

Niederschlagsereignis mit Auswirkungen in der Region Jura, in den Waadtländer Alpen und am östlichen Alpennordhang

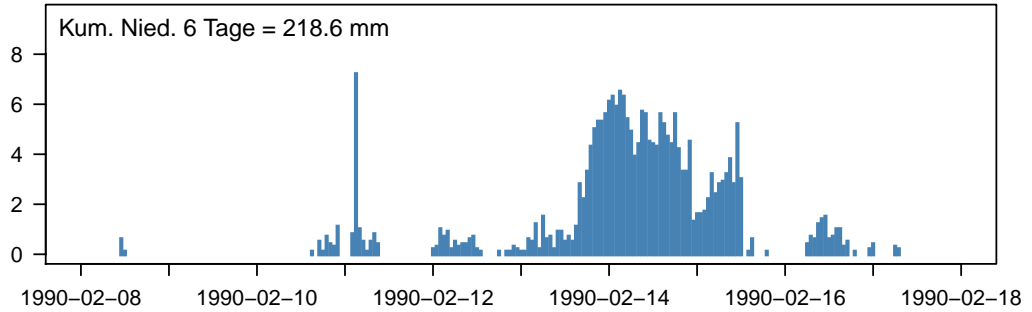
### Hyetogramme

Stündlicher Niederschlag, hh:40-hh:40 UTC

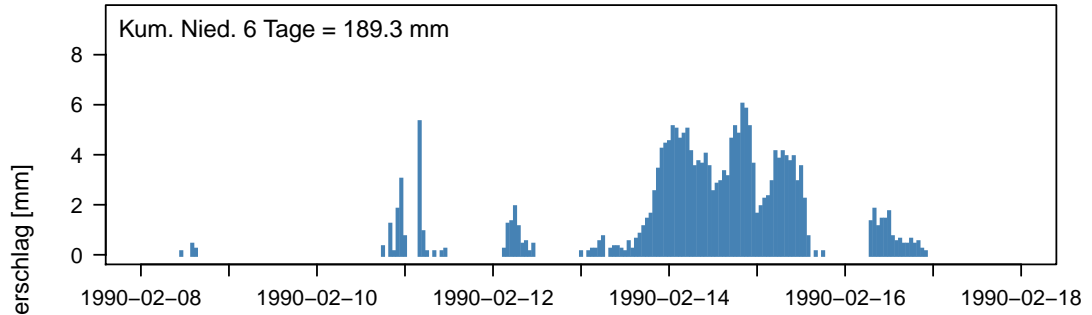
Hyetogramme an 10 Stationen mit grossen Niederschlagssummen über 6 Tage



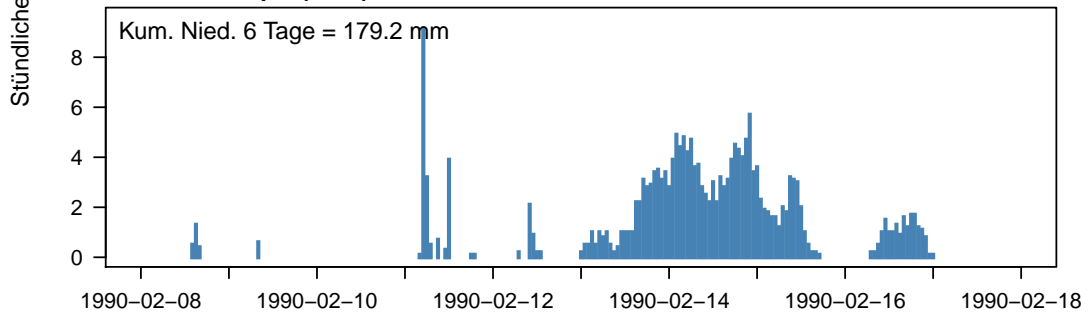
### Bullet / La Frétaz (FRE)



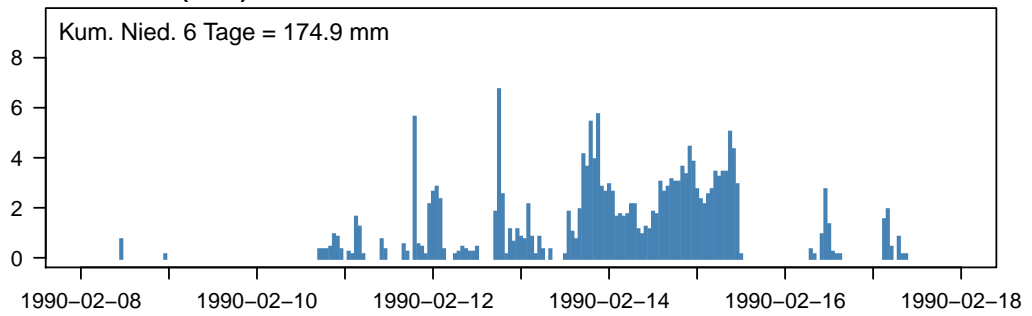
### Adelboden (ABO)



### Grimsel Hospiz (GRH)

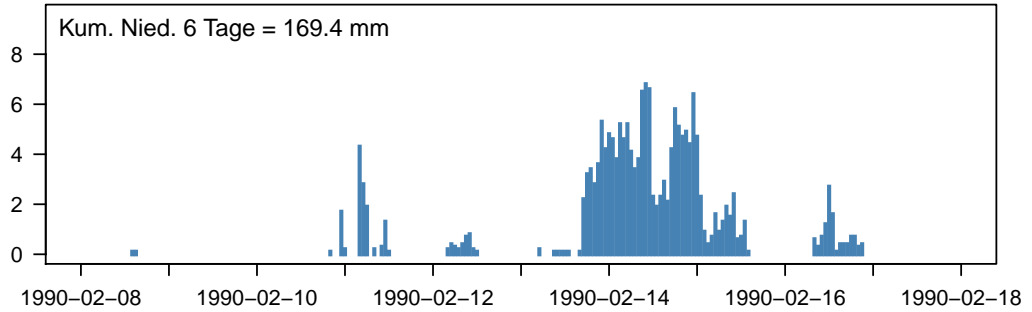


### Chasseral (CHA)

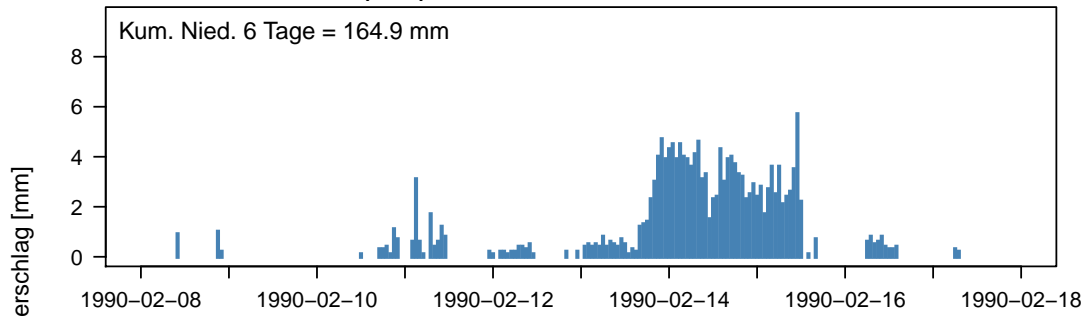


Zeit [Tage]

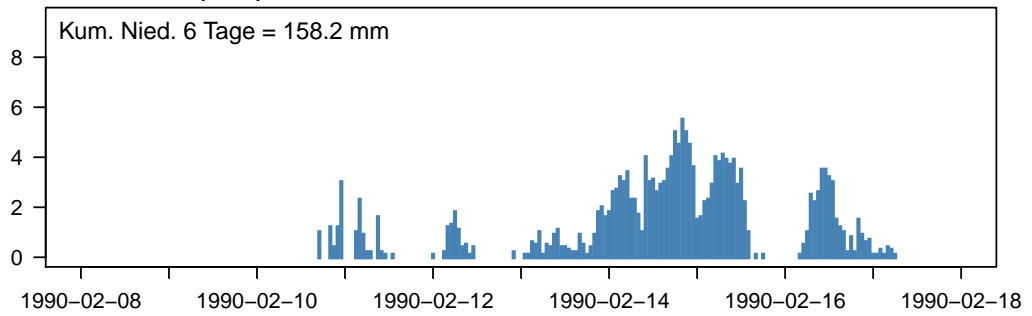
### Interlaken (INT)



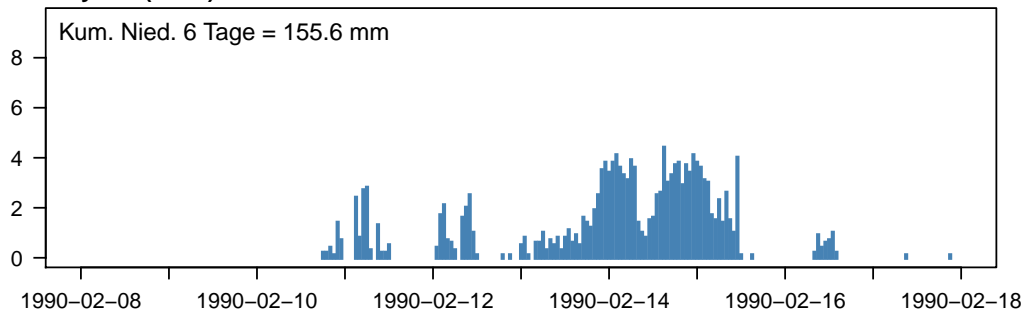
### La Chaux-de-Fonds (CDF)



### Le Moléson (MLS)



### Wynau (WYN)



Zeit [Tage]